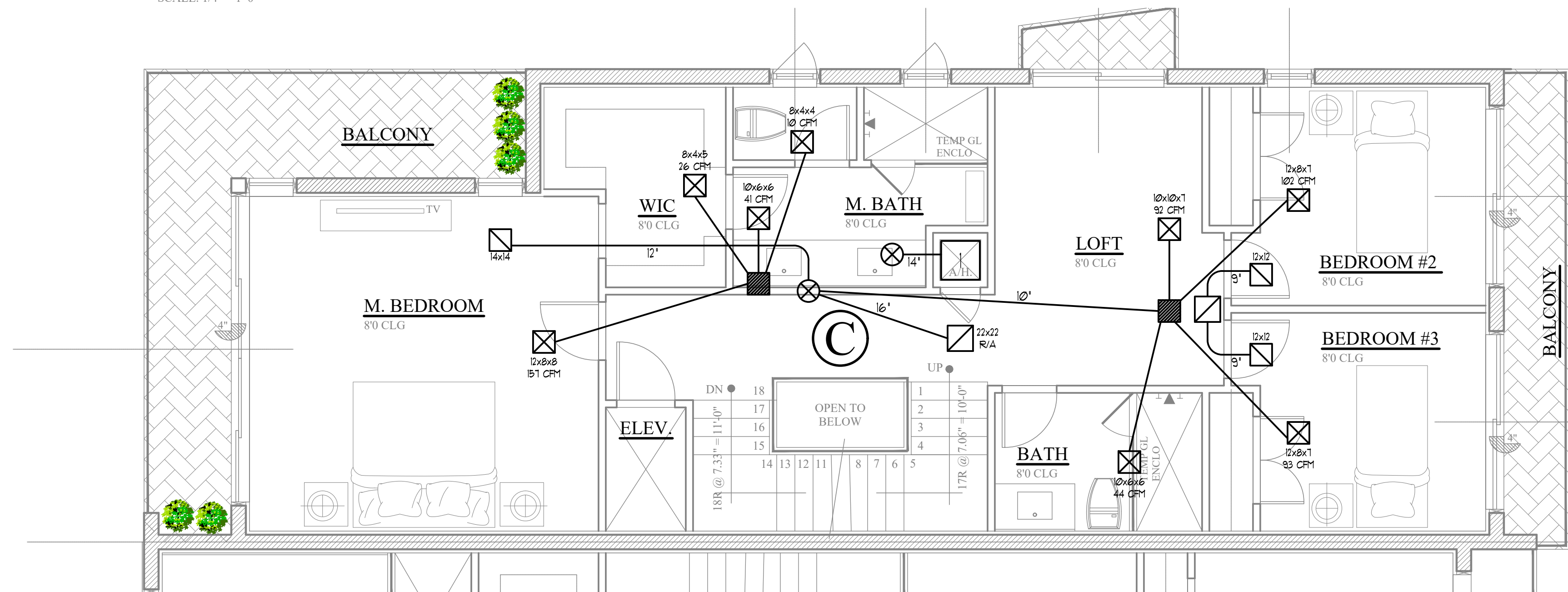


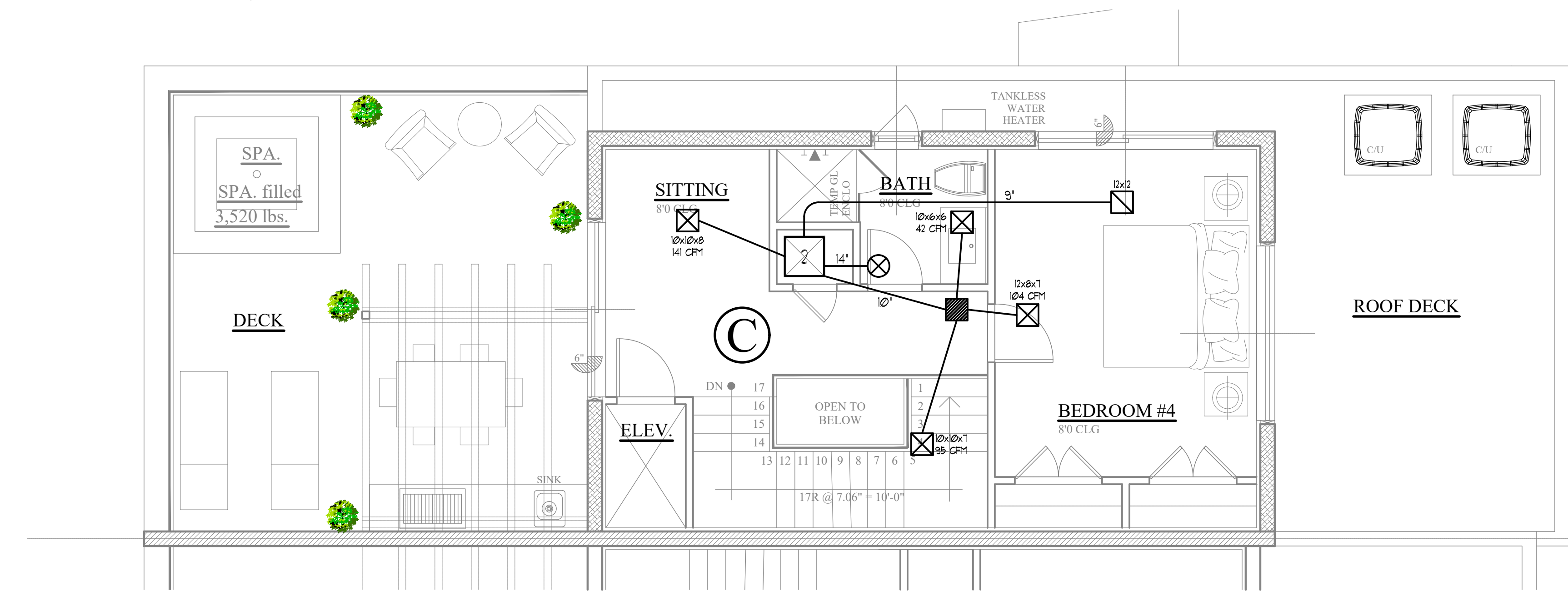
UNT-C 1st. FLOOR MECHANICAL PLAN

SCALE: 1/4" = 1'-0"



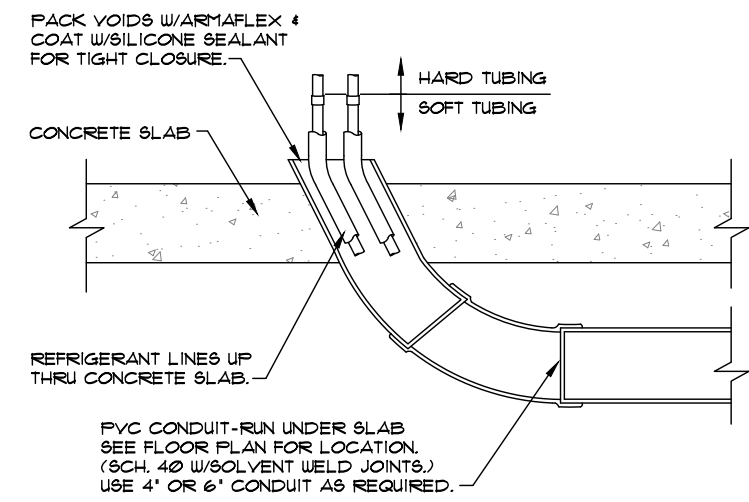
UNT-C 2dn. FLOOR MECHANICAL PLAN

SCALE: 1/4" = 1'-0"



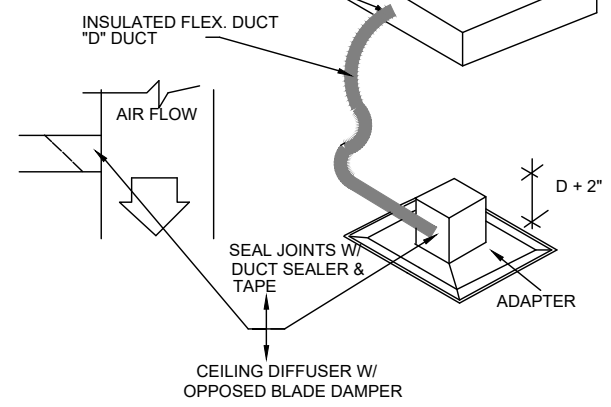
UNT-C 3rd. FLOOR MECHANICAL PLAN

SCALE: 1/4" = 1'-0"

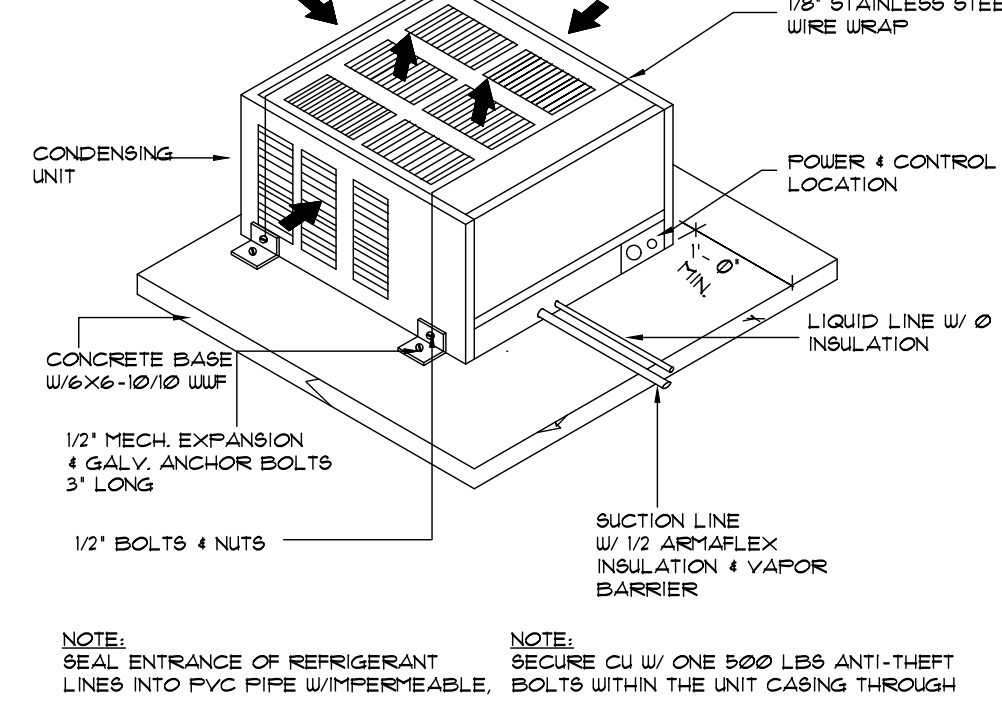
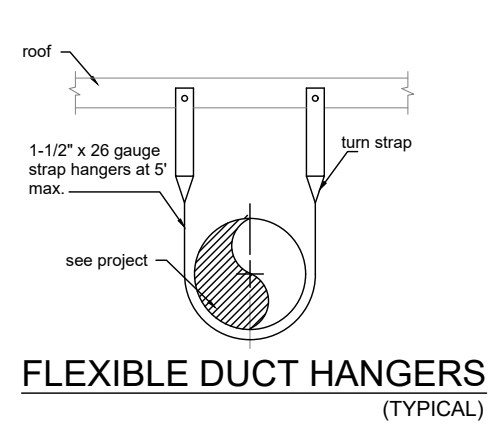


NOTES:
1. CONCEALED OR NON-REMOVABLE JOINTS SHALL NOT BE INSTALLED BELOW THE SLAB.
2. PVC SCH 40 SLEEVES SHALL BE 2' LARGER THAN THE PIPE INSULATION ENCASED, HAVING AN ANGLE NO GREATER THAN 45 DEGREES WITH THE ENCASED REFRIGERANT PIPING, REMOVABLE FOR REPLACEMENT.

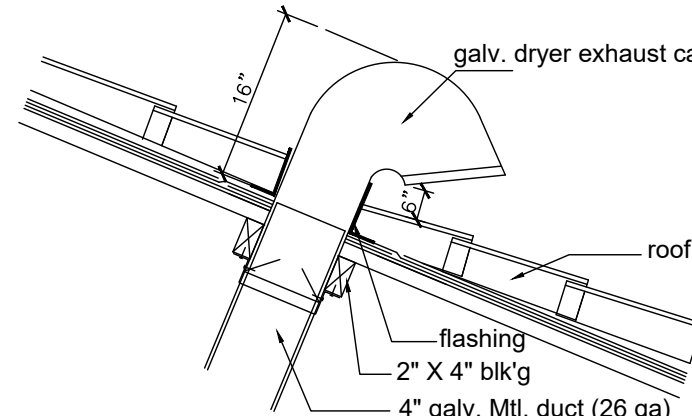
QUADRANT OPERATOR TO BE OUTSIDE INSULATION. PROVIDE INSULATION GUARD WHERE NECESSARY.



FLEXIBLE DUCT CONNECTION DETAIL
NOT SCALE

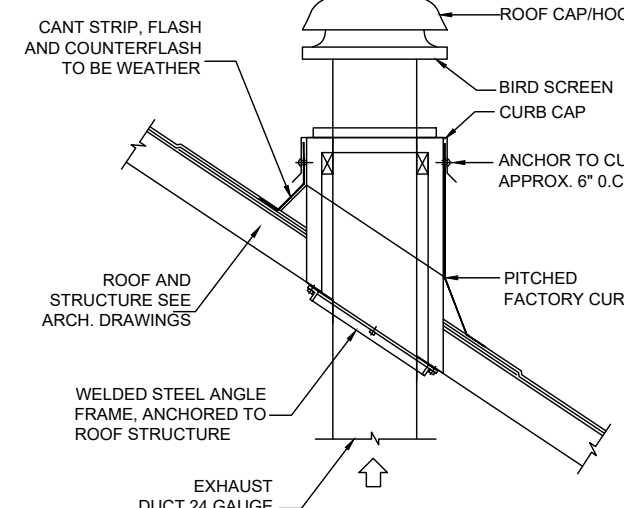


C.U. MOUNTING DETAIL n.t.s.



EXHAUST ROOF CAP DETAIL (TYPICAL)

EXHAUST NOTE:
EXHAUST DUCT SHALL GO THRU ROOF AND TERMINATE 6" MIN. ABOVE ROOF SURFACE. PROVIDE A BACKDRAFT DAMPER WITH A CORROSION RESISTANT SCREEN MATERIAL HAVING A MESH NOT LARGER THAN 1/2". AND BE FITTED WITH A WEATHER CAP. BATHROOM EXHAUST DUCTS SHALL BE SHEET METAL.



EXHAUST HOOD ROOF CAP DETAIL (TYPICAL)

A/C NOTE:
A/C MUST HAVE PROGRAMMABLE THERMOSTAT

A/C STATIC PRESSURE
125" S.P. WATER GAUGE

AUXILIARY DRAIN PAN
AUXILIARY DRAIN PAN SHALL HAVE A MINIMUM DEPTH OF 1-1/2" AND SHALL NOT BE LESS THAN 3" LARGER THAN UNIT OR COIL DIMENSIONS IN WIDTH AND LENGTH AND SHALL BE CONSTRUCTED OF NOT LESS THAN 24 GAUGE GALVANIZED SHEET METAL

BATHROOM EXHAUST
BATHROOM EXHAUST DUCT SHALL GO THRU ROOF AND TERMINATE 6" MIN. ABOVE ROOF SURFACE. PROVIDE A BACKDRAFT DAMPER, WITH A CORROSION RESISTANT SCREEN MATERIAL HAVING A MESH NOT LARGER THAN 1/2", AND BE FITTED WITH A WEATHER CAP. BATHROOM EXHAUST DUCTS SHALL BE SHEET METAL

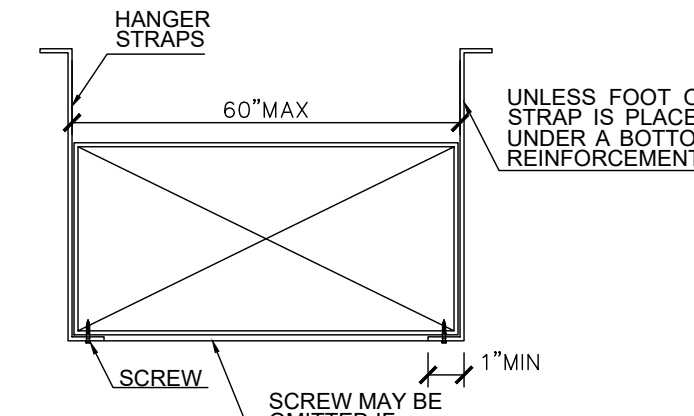
EXHAUST FAN SCHEDULE

UNIT SYMBOL	EF-1	EF-2
LOCATION	KITCHEN	BATHROOMS
MANUFACTURE	BROAN	BROAN
MODEL	EW60SSS	XB50
TYPE	ROOF	CEILING
FAN CFM	500	50
DUCT SIZE	6"	4"
DAMPER INCLUDED	YES UNIT IF AUTOMATIC MAKE-UP AIR DAMPER	N/A
VOLTS	120	120
AMPS	2.88	0.3
SONES	10.5 HIGH 2.5 LOW	0.3

GENERAL H.V.A.C. NOTES:

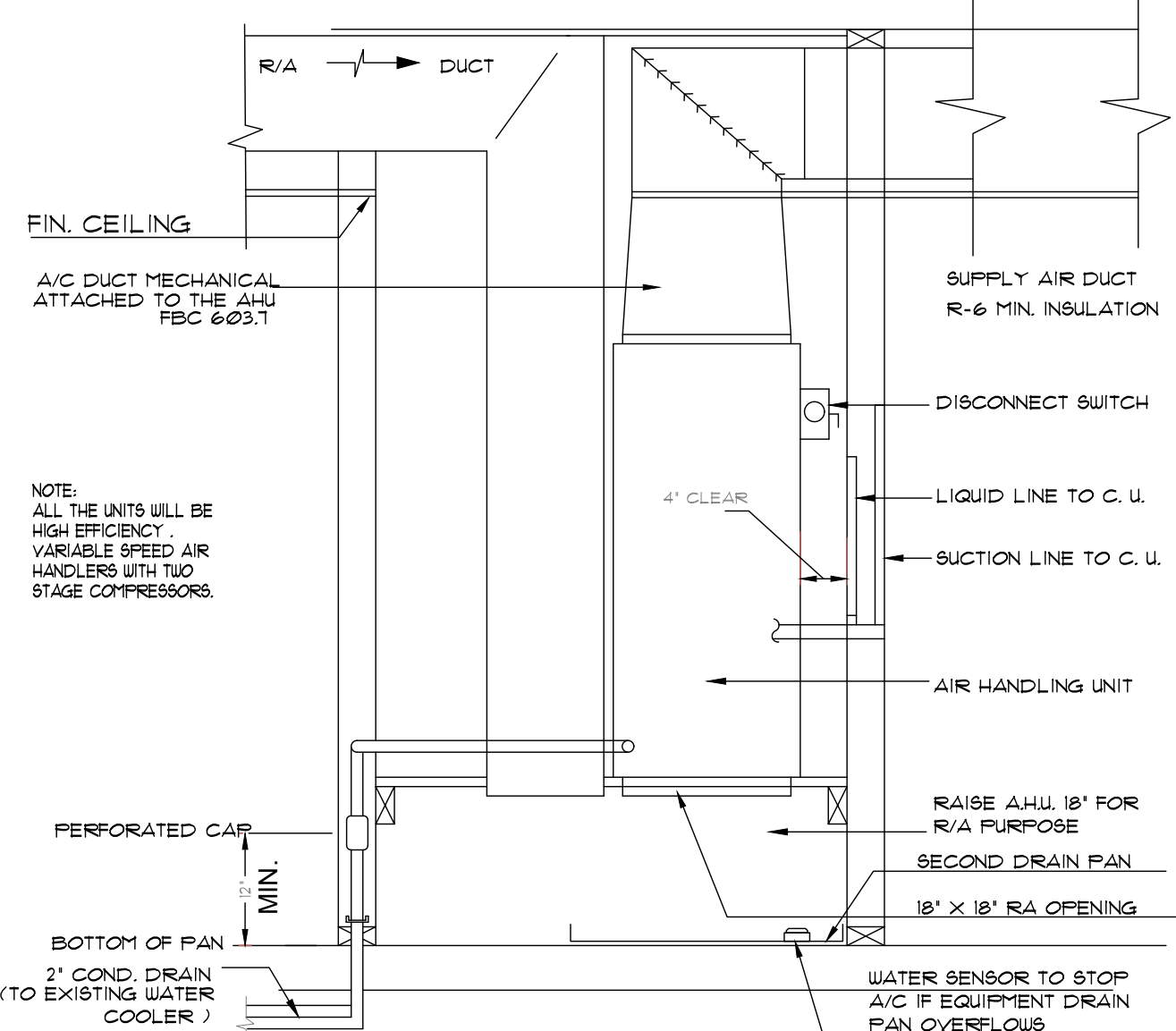
- THE CONTRACTOR SHALL FURNISH ALL LABOR, MATERIAL AND EQUIPMENT FOR A COMPLETE H.V.A.C. SYSTEM IN ACCORDANCE WITH THESE DRAWINGS, THE FLORIDA BUILDING CODE AND THE LATEST EDITION OF THE FOLLOWING PUBLICATIONS:
A) ASHRAE
B) NFPA
C) SMACNA
D) ASHRAE
- ALL AIR CONDITIONING DUCTWORK SHALL BE 1-1/2" NCH STANDARD DUTY FOLL. REINFORCED FIBERGLASS WITH MANUFACTURED LOGO PRINTED ON THE VAPOR BARRIER.
- DUCT SIZE SHOWN ARE NET FREE AREA.
- ALL AIR DEVICES (DIFFUSERS, REGISTERS AND GRILLES) SHALL BE ALL ALUMINUM CONSTRUCTION WITH EXPOSED SURFACE CHEMICALLY TREATED TO RECEIVE PAINT TO MATCH COLOR OR AIRGUIDE OR APPROVED EQUAL.
- PROVIDE OFFSEED BLADE DAMPERS AT ALL DIFFUSERS AND REGISTERS.
- PROVIDE TURNING VANES AND EXTRACTORS ALL ELBOWS AND TAKE OFF'S.
- THERMOSTATS SHALL BE COMBINATION COOLING/HEATING WITH SYSTEM COOL/AUTO/HEAT/OFF AND FAN ON/AUTO SELECTOR SWITCHES.
- FAN COIL SHALL BE MOUNTED ON A STRUCTURAL STEEL BASE OR WOOD FRAME WITH CONTINUOUS STRIP OF ISOMODE AOVAL ITS PERIMETER. CONDENSING UNIT SHALL BE ANCHORED TO ITS BASE PER MANUFACTURER'S SPECIFICATION.
- REFRIGERANT PIPING SHALL BE COPPER TYPE 'L' ARMAFLEX INSULATION SHALL BE PROVIDED FOR SUCTON LINES.
- PROVIDE NEW FILTERS FOR FAN COIL BEFORE STARTING. THESE FILTERS MUST ALSO BE REPLACED PRIOR TO FINAL ACCEPTANCE BY OWNER.

HVAC DESIGN REQUIRES	YES	NO
DUCT SMOKE DETECTOR	✓	
FIRE DAMPER(S)	✓	
SMOKE DAMPER(S)	✓	
FIRE RATED ENCLOSURE	✓	
FIRE RATED ROOF/FLOOR CEILING ASSEMBLY	✓	
FIRE STOPPING	✓	
SMOKE CONTROL	✓	



RIGIT DUCT DETAIL
NOT SCALE

AREA CALCULATION: C	
1st FLOOR - A/C	1,092 S.F.
2nd FLOOR - A/C	1,086 S.F.
3rd FLOOR - A/C	588 S.F.
TOTAL - A/C:	2,766 S.F.
GARAGE	216 S.F.
ENTRY	43 S.F.
PATIO	66 S.F.
BALCONY 1	154 S.F.
BALCONY 2	66 S.F.
BALCONY 3	19 S.F.
UPPER DECK	828 S.F.
ROOF	588 S.F.
SUB-TOTAL:	1,979 S.F.
GRAND TOTAL:	4,745 S.F.



AIR CONDITIONING CLOSET (TYP)
N.T.S.

AHU NOTE:
AHU CLOSET COMPLY WITH FBCR M 1305.11 FURNACES AND AIR HANDLERS WITHIN COMPARTMENTS OR ALCOVES SHALL HAVE A TOTAL WIDTH OF THE ENCLLOSING SPACE BEING AT LEAST 6" INCHES WIDER THAN THE FURNACE OR AIR HANDLER